



## Rabbit anti IRS-2 (pS731) Polyclonal Antibody

Alternative Name(s): Insulin receptor substrate 2; IRS2

### Order Information

- **Description:** IRS-2 (pS731)
- **Catalogue:** 500-9004
- **Lot:** See label
- **Size:** 100ug/200ul
- **Host:** Rabbit
- **Clone:** nan
- **Application:** IHC(P), WB
- **Reactivity:** Hu/Rt/Ms

### **ANTIGEN PREPARATION**

A synthetic peptide corresponding to the epitope ASSPA with a single phosphorylation site Ser 731 of human IRS-2.

### **BACKGROUND**

Insulin Receptor Substrate-2 (IRS-2), a 180kDa cytoplasmic docking protein, is one of the major endogenous substrates of the insulin receptor kinase. The insulin receptor mediates insulin action through the phosphorylation of substrate proteins. The major substrates of the insulin receptor kinase are the insulin receptor substrate (IRS) family of proteins, IRS 1, IRS 2, IRS 3, and IRS 4. IRS 2, a signaling molecule that mediates effects of insulin, Insulin-like growth factor 1 and other cytokines by acting as a molecular adaptor between diverse receptor kinases and downstream effectors. IRS proteins contain more than 70 potential Ser / Thr phosphorylation sites for kinases like PKA (cAMP-dependent protein kinase), PKC, and MAPK. The phosphorylation of Ser / Thr residues of IRS proteins has a dual function, serving either for a positive or negative modulation of insulin signal transduction.

### **PURIFICATION**

The Rabbit IgG is purified by site-modified Epitope Affinity Purification.

### **FORMULATION**

This affinity purified antibody is supplied in sterile Tris-buffered saline (pH7.2) containing antibody stabilizer

### **SPECIFICITY**

This antibody recognizes ~180 kDa of human IRS-2 (pSer731). It also reacts with mouse and rat. The other species are not tested.

### **STORAGE**

The antibodies are stable for 24 months from date of receipt when stored at -20oC to -70oC. The antibodies can be stored at 2oC-8oC for three month without detectable loss of activity. Avoid repeated freezing-thawing cycles.

### **APPLICATIONS/SUGGESTED WORKING DILUTIONS\***

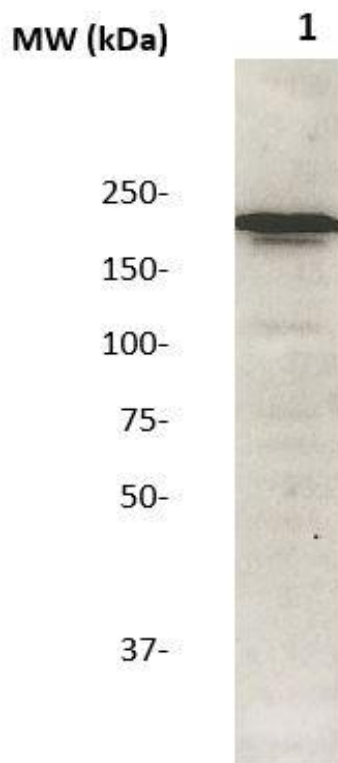
- Western Blot: 0.1-1 µg/ml
- ELISA: 0.01-0.1 µg/ml
- Immunoprecipitation: 2-5 µg/ml
- IHC: 2-10 µg/ml
- Flow cytometry: Not tested
- Molecular Weight: 180.0
- Positive Control: Kidney Tissue
- Cellular Location: Cell Membrane

\*Optimal dilutions should be determined by researchers for the specific applications.

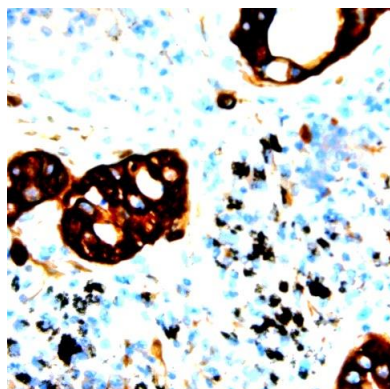
### **FOR RESEARCH USE ONLY.**

AbboMax, Inc 2528 Qume Drive, Suite 8, San Jose, California 95131, USA  
1 408-573-1898 (Tel). 1 408-573-1858 (Fax). [www.abbomax.com](http://www.abbomax.com) [info@abbomax.com](mailto:info@abbomax.com)

## DATA ATTACHMENTS



Western Blot: The cell lysate derived from insulin-stimulated-PANC1 was immunoprecipitated by Rabbit anti IRS-2 (pS731), (Cat#500-9004), then immunoprobed by the same antibody at 1:500. Observed a major immunoreactive band at molecular weight ~180kDa.



Immunohistochemistry: Human Breast carcinoma (FFPE) stained with Rabbit anti-IRS2(pS731) (Cat# 500-9004) at 1:200 for 10 min @ RT. Staining of formalin-fixed tissue requires boiling tissue sections in 10 mM Citrate Buffer, pH 6.0 for 10 min followed by cooling at RT for 20 min.

## REFERENCES

### FOR RESEARCH USE ONLY.

AbboMax, Inc 2528 Qume Drive, Suite 8, San Jose, California 95131, USA  
1 408-573-1898 (Tel). 1 408-573-1858 (Fax). [www.abbomax.com](http://www.abbomax.com) [info@abbomax.com](mailto:info@abbomax.com)